

RICOH
imagine. change.

Digital full color multifunction printers

IM C2510

IM C3010

IM C3510

IM C4510

IM C6010

Printer Copier Scanner Fax



IM C2510



25 ppm

IM C3010



30 ppm

IM C3510



35 ppm

IM C4510



45 ppm

IM C6010



60 ppm

Intelligent devices that unlock powerful results

The office landscape has changed tremendously in the last few years. As more companies adopt hybrid and borderless work, digital workflows are opening up new possibilities for better information sharing, in-office space optimization, efficiency, and cost-effective operations.

At the same time, the need for more robust IT and print infrastructure, including improved software and hardware solutions to address security challenges, has emerged — and the pursuit of responsible environmental stewardship has never been more important.

Ricoh's latest generation of IM C Series is tailored to support businesses like yours in optimizing a digitally-enabled workplace with technology designed to enhance productivity and protect your data. These intelligent devices lead the market in environmental performance and offer seamless scalability to adapt to your changing business needs. They also provide employees an enhanced experience with a simple-to-use interface, the ability to create high-quality color output on-demand at a reasonable cost, and the versatility to easily transition between paper and digital workflows.

The IM C Series has everything you need to capture, print, connect, and keep your information secured to unlock powerful results, and build the ideal hybrid print infrastructure for your business.



Support your sustainability goals with leading Typical Electricity Consumption (TEC) values and more recycled plastic



Protect your business' data and intellectual property



Get the latest device technology and customization options to match your needs



Work more efficiently with improved usability and productivity





Designed for your workplace today — and tomorrow

Today, the need for a seamless print infrastructure is an essential part of a successful digital workplace strategy to support employees wherever they are.

With Ricoh's intelligent devices, you can digitize your document workflows and gain fast and secured access to your information when needed. With standard copy, print, and scan capabilities, you can customize your device by adding software solutions, apps, and cloud services to support every stage of your business growth.

The newest generation of the IM C Series offers users a seamless experience and great results. From brilliant color output to enhanced data security, scanning, and paper handling, these devices will help you elevate the way work gets done.

The new benchmark in sustainability

As an industry leader in environmental performance, we make a difference not just through our own commitments, but by supporting your targets, too. We help you save energy and minimize your environmental footprint and have also added enhanced scanning features to promote more digital workflows that help reduce paper consumption and waste.

More energy savings

Toner fixing accounts for up to 70% of a printer's energy consumption. Our innovative IM C Series offers significantly lower energy usage through a new toner that fuses at a lower temperature. Power consumption during Sleep Mode has been reduced to help you achieve a smaller carbon footprint and lower costs.

More recycled plastic

Designed for sustainability across its lifecycle, the new IM C Series incorporates the use of 50% post-consumer recycled plastics, while PET toner bottles are produced from 100% recycled plastics. Plastic packaging is reduced by 54% thanks to the use of more sustainable materials and removal of excess packaging.

Supporting a circular economy

The new IM C Series is designed to help reduce environmental impacts at each stage of the product lifecycle — from production, usage, and end-of-life collection and recycling.



Reliable protection of your data

Hybrid work has enabled new ways of employee collaboration and created opportunities for increased mobility, efficiency and flexibility. Inevitably, it also raises challenges when it comes to protecting intellectual property and sensitive data. Our IM C Series help you mitigate risk by placing the most advanced security technologies right at your fingertips. Built with the latest operating system, these new devices integrate a new admin management system and Ricoh's Always Current Technology for extra peace of mind.

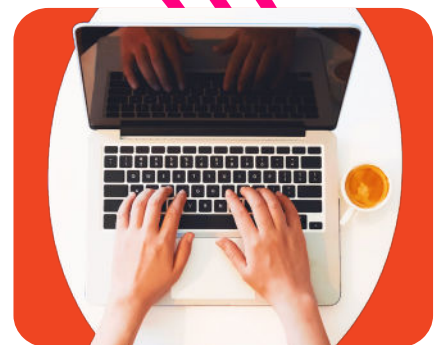
Enhanced privileged account control

This feature gives you more freedom when creating MFP administrator roles. The number of admins is no longer limited to just four, eliminating risks related to sharing IDs. You can assign different privileges to each role and link it to your user ID system, including Windows and LDAP platforms.



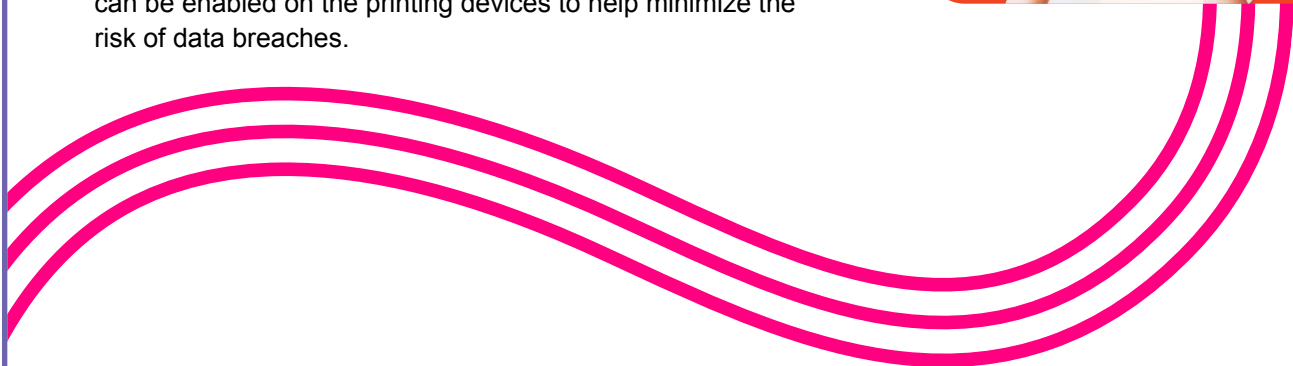
Trusted platform module support

The new IM C Series incorporates the latest version (2.0) of Trusted Platform Module (TPM) as standard. Stronger technology improves encryption strength and protects important data such as passwords and encryption keys stored in the device.



Multi-factor authentication

With optional components, multi-factor authentication (MFA) can be enabled on the printing devices to help minimize the risk of data breaches.



Technology that evolves with you

As your business grows, you need the right technology to take advantage of new opportunities. And as your digital transformation progresses, you need the right partner to help you stay ahead. Along with Ricoh's trusted quality and technical expertise, our eco-friendly intelligent devices can scale along with your business needs — and deliver value as your business grows. Underpinned by a secured cloud infrastructure, the IM C Series offers customization, flexibility, and reliable security and service updates that are just a download away.

Scalable and customizable

Discover the freedom of smart scalability. With the new IM C Series, you have the flexibility to tailor your device to suit your business needs. Simply download the latest features and upgrades as you need them. Add software solutions, applications, cloud services and customize your device. With the right digital workflow solutions, you can help your employees work faster, smarter, and more securely at every stage of your business growth.

Automatic security and software updates

Forget the days of buying a new device, waiting until the end of your contract, or contacting a technician every time you need updated technology. With Ricoh's Always Current Technology, new features, applications, and security updates can be downloaded and installed directly to your device on request, keeping you up to date with the latest versions and avoiding downtime.

RICOH Smart Integration (optional) and Smart Device Connector

Ricoh's Smart Integration allows you to personalize and enhance the capabilities of your IM C Series device with applications and solutions readily available from the cloud. The free Smart Device Connector app facilitates connecting mobile devices securely to your device, allowing users to easily scan, print, copy, and share documents from their smartphones and tablets. Save time, improve productivity and automate repetitive document workflow tasks with the push of a button. Now you can quickly route your documents to the right place, in the right format and with the right file name.

RICOH Streamline NX® (optional)

Ricoh's Streamline NX is a powerful suite of scalable, integrated document management applications and tools that allow you to implement standardized intelligent solutions in every office, globally. Streamline NX can also simplify device and document management tasks such as administration and reporting, user authentication, and more to help you cut operational costs, improve security and compliance, and make process improvements.

RICOH CloudStream (optional)

Ricoh's CloudStream allows you to manage your print infrastructure with ease. It is an all-in-one hybrid print platform that enables companies of all sizes to benefit from the agility and innovation of cloud technology. Streamline your print infrastructure, eliminate print servers, and reduce your IT burden with this cost-effective SaaS solution.

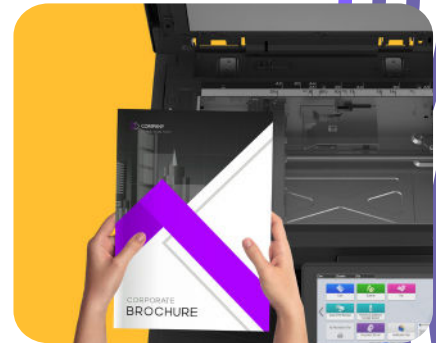


Enhanced quality, access, and productivity across digital and print

The IM C Series is designed to create the ultimate employee experience, with features that save time and increase efficiency. Its digital technologies give you the power to streamline workflows — making processes smoother and more efficient while encouraging better collaboration. New peripherals enhance paper handling while upgraded hardware ensures quick, reliable performance. The enhanced user interface features a simple and easy-to-use operating panel, making the new IM C Series an excellent hub for your information management needs.

Optimized scanning features

With a combination of powerful scanning functions and an intuitive user interface, daily scanning and copying routines are easier than ever before. High-quality and high-speed scanning makes it possible for employees to share files quickly and seamlessly.



Third-generation Smart Operation Panel (SOP)

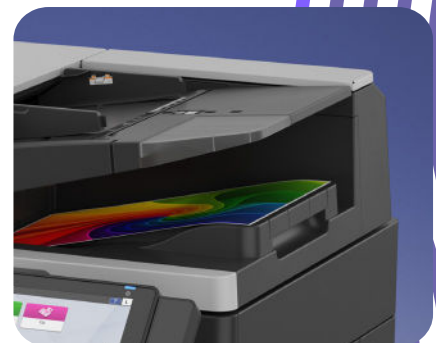
Our familiar, user-friendly operation panel has been enhanced for an even more intuitive and enjoyable experience. Brightness, touch sensitivity and position detection have all been enhanced for optimal access to the device's many resources and functions.

- Upgraded OS for better security and usability
- Integrated card reader cover option
- Greater touch sensitivity
- Tilttable for better visibility and accessibility



New efficiencies in paper handling

New peripherals, including wide media handling and finishing options, allow for the creation of a broad variety of sophisticated marketing materials such as brochures, booklets, and presentations in-house. The new single-pass document feeder scans two-sided documents in one pass and is built to handle high scan/copy volumes, smaller-sized and special paper types.



Find your perfect fit – meet the new generation of IM C Series intelligent devices

The new IM C Series combines a simple and sophisticated design with strong technical capabilities to match your way of working. Take a closer look.

IM C2510

An intelligent multifunction device built for your modern office and workstyle

- Prints up to 25 ppm, copy, scan, fax (optional)
- 1200 x 1200 dpi max print resolution
- Paper capacity up to 2,300 pages
- Embrace a suite of multifunction capabilities for a competitive edge



IM C3010/IM C3510

An intelligent multifunction device that keeps pace with how business gets done today

- Prints up to 30 or 35 ppm, copy, scan, fax (optional)
- 1200 x 1200 dpi max print resolution
- Paper capacity up to 4,700 pages
- Engineered to work the way you do work today and tomorrow



IM C4510/IM C6010

With impressive speed and productivity, this intelligent multifunction device helps keep your business moving

- Prints up to 45 or 60 ppm, copy, scan, fax (optional)
- 1200 x 1200 dpi max print resolution
- Paper capacity up to 4,700 pages
- Keep your teams in sync, even on the go



All models shown with optional accessories



IM C2510/IM C3010/IM C3510/IM C4510/IM C6010

MAIN SPECIFICATIONS

	IM C2510	IM C3010	IM C3510	IM C4510	IM C6010
GENERAL					
Warm-up time	24 seconds	25 seconds	25 seconds	24 seconds	24 seconds
First output speed: B/W	4.5 seconds	4.0 seconds	4.0 seconds	3.2 seconds	2.4 seconds
First output speed: full color	7.0 seconds	6.6 seconds	6.6 seconds	5.2 seconds	3.8 seconds
Continuous output speed	25 ppm	30 ppm	35 ppm	45 ppm	60 ppm
Memory: standard	Mainframe 2GB+SOP 4GB	Mainframe 4GB + SOP 4GB	Mainframe 4GB + SOP 4GB	Mainframe 4GB + SOP 4GB	Mainframe 4GB + SOP 4GB
SSD: standard			256 GB		
SPDF capacity			220 sheets		
Weight	96.1 kg / 211.9 lbs.	99.3 kg / 218.9 lbs.	99.3 kg / 218.9 lbs.	100.8 kg / 222.2 lbs.	100.8 kg / 222.2 lbs.
Dimensions:WxDxH		23.1" x 27.6" x 37.9" (587 mm x 701 mm x 963 mm)			
Power source		120V-127V, 60Hz			
COPIER					
Multiple copying		Up to 999 copies			
Resolution		600 dpi			
Zoom		From 25%-400% in 1% increments			
PRINTER					
CPU	Intel Apollo Lake 1.3 GHz	Intel Apollo Lake 1.3 GHz	Intel Apollo Lake 1.3 GHz	Intel Apollo Lake 1.6 GHz	Intel Apollo Lake 1.6 GHz
Printer language: standard	PCL5c, PCL6, PostScript®3™ Emulation, PDF Direct Print Emulation				
Printer language: option	Genuine Adobe® PostScript®3™, Adobe® PDF Direct Print				
Print resolution: maximum	Up to 1200 x 1200 dpi				
Network interface: standard	Ethernet 10 base-T/100 base-TX/1000 base-T, USB Host I/F Type A, USB Device I/F Type B				
Mobile printing capability	Apple AirPrint™, Mopria, Ricoh Smart Device Connector				
Windows® environments	Windows 8.1/10/11; Windows Server 2012/2012 R2/2016/2019/2022				
Mac OS environments	macOS v10.15 or later				
UNIX environments	UNIX Sun® Solaris, HP-UX, SCO OpenServer, RedHat® Linux Enterprise, IBM® AIX				
SAP® environments	SAP R/3,SAP S/4				
Other supported environments	IBM iSeries AS/400-using OS/400 Host Print Transform				
SCANNER					
Scanning speed: SPDF	150 ipm (simplex)/300 ipm (duplex)				
Resolution: maximum	Up to 1200dpi				
Compression method File Formats	Single Page: TIFF, JPEG, PDF, PDF/A, High Compression PDF, encryption PDF, Searchable PDF (Option required) Multi Page: TIFF, PDF (Default), PDF/A, High Compression PDF, encryption PDF, Searchable PDF (Option required)				
Scan destination types	E-mail, Folder, USB, URL, FTP				
FAX (Optional)					
Circuit	PSTN, PBX				
Transmission speed	3 seconds				
Modem speed: maximum	33.6 Kbps				
Resolution: standard	8x3.85 line/mm, 200x100 dpi				
Maximum Resolution: option	16x15.4 line/mm, 400x400 dpi				
Compression method	MH, MR, MMR, JBIG				
Scanning speed	94 spm				
Memory: standard	4 MB, (320 pages)				
Memory: maximum	60 MB, (4,800 pages)				
PAPER HANDLING					
Recommended paper size	1st Paper Tray: 8.5" x 11" (A4) 2nd Paper Tray: 5.5" x 8.5"- 12" x 18" (A3-A6, B4-B6), Envelopes Bypass: Up to 12" x 18", Envelopes Custom Sizes: Width:3.5" - 12.6" (90 - 320 mm), Length: 5.8" - 49.6" (148 - 1260mm)				
Paper input: standard	1,200 sheets (2 x 550 sheets+ 100-Sheet Bypass Tray)				
Paper input: maximum	2,300 sheets	4,700 sheets	4,700 sheets	4,700 sheets	4,700 sheets
Paper output: standard	500 sheets 8.5" x 11"(A4) or smaller; 250 sheets (B4) or larger				
Paper output: maximum	1,625 sheets	1,625 sheets	1,625 sheets	3,625 sheets	3,625 sheets
Paper weight	Standard Trays: 16 - 80 lb. /166 lb. Index (60 - 300 g/m2) Bypass Tray: 14 - 80 lb. /166 lb. Index (52 - 300 g/m2)				
	Duplex Unit: 14-45 lb. /142 lb. Index (52-169 g/m²)	Duplex Unit: 14 - 68 lb. /142 lb. Index (52 - 256 g/m²)	Duplex Unit: 14 - 68 lb. /142 lb. Index (52 - 256 g/m²)	Duplex Unit: 14 - 68 lb. /142 lb. Index (52 - 256 g/m²)	Duplex Unit: 14 - 68 lb. /142 lb. Index (52 - 256 g/m²)
Paper types	Plain, Recycled, Special, Colored, Letterhead, Cardstock, Pre-printed, Coated, Envelope, Label, Gloss				

IM C2510/IM C3010/IM C3510/IM C4510/IM C6010

MAIN SPECIFICATIONS

	IM C2510	IM C3010	IM C3510	IM C4510	IM C6010
ENVIRONMENTAL FEATURES					
Power consumption: maximum	Less than 1,584 W				
Power consumption operation: B&W	462 W	473 W	488 W	582 W	748 W
Power consumption operation: Full color:	509 W	522 W	549 W	672 W	876 W
Power consumption: ready/sleep	40.9 W/0.3 W	46.2 W/0.3 W	46.2 W/0.3 W	47.2 W/0.3 W	47.2 W/0.3 W
TEC*	0.25 kWh/week	0.30 kWh/week	0.35 kWh/week	0.45 kWh/week	0.69 kWh/week

* It is a reference value based on the ENERGY STAR Ver.3.0 test method.

CONSUMABLES

Toner (black)	16,500 prints	31,000 prints	31,000 prints	42,000 prints	42,000 prints
Toner (cyan/magenta/yellow)	10,500 prints	19,000 prints	19,000 prints	28,000 prints	28,000 prints

Consumable yields based on 3 pages/job and 5% coverage on A4 paper

PAPER SUPPLIES AND FINISHER OPTIONS

2x 550-sheet paper tray, 2,000-sheet Large capacity tray, 1,500-sheet Side large capacity tray, 1,000-sheet Hybrid finisher, 1,000-sheet Booklet finisher, 500-sheet Internal finisher, Internal shift tray, One-bin tray, 3,000-sheet finisher (IM C4510/IM C6010 only)

OTHER OPTIONS

Fax unit, G3 Interface, Fax memory unit, Cabinet, Stapleless unit, Punch units, Internal Multi-fold unit, Genuine Adobe PostScript(R) 3, IEEE 802.11 a/b/g/n/ac, OCR unit, 320 GB HDD, Enhanced Security SSD, Counter I/F unit, Card Reader Cover, IPDS Unit, Fiery Color Controller, Fiery Impose, Fiery Compose, Fiery Hot Folders

Some options may not be available at the time of market release.

Specifications are subject to change without notice.

For maximum performance and yield, we recommend using genuine Ricoh parts and supplies.

Some features may require additional options and/or charges.



Enable seamless digital workspaces with a scalable print infrastructure

Transform your workspace and empower your team with smart devices that maximize collaboration, streamline digital workflows, and enhance printing capabilities.

Ricoh's newest generation of the IM C Series scales with your needs and has everything you need to capture, print, connect, and keep your information secured to unlock powerful results, and build the ideal hybrid print infrastructure for your business.

Contact us today to learn more.

Ricoh, a trusted partner

At Ricoh, we're empowering our customers to respond to our changing world with actionable insights. We believe having access to the right information translates to better business agility, more human experiences, and the ability to thrive in today's age of hybrid and borderless work. Through our people, experience, and solutions, we create competitive advantage every day for over 1.4 million businesses around the globe. To us, there's no such thing as too much information.



RICOH
imagine. change.

www.ricoh-usa.com

Ricoh USA, Inc., 300 Eagleview Blvd, Exton, PA 19341, 1-800-63-RICOH.

©2023 Ricoh USA, Inc. All rights reserved. Ricoh® and the Ricoh logo are registered trademarks of Ricoh Company, Ltd. All other trademarks are the property of their respective owners. The content of this document, and the appearance, features and specifications of Ricoh products and services are subject to change from time to time without notice. Products are shown with optional features. While care has been taken to ensure the accuracy of this information, Ricoh makes no representation or warranties about the accuracy, completeness or adequacy of the information contained herein, and shall not be liable for any errors or omissions in these materials. Actual results will vary depending upon use of the products and services, and the conditions and factors affecting performance. The only warranties for Ricoh products and services are as set forth in the express warranty statements accompanying them.

R4171